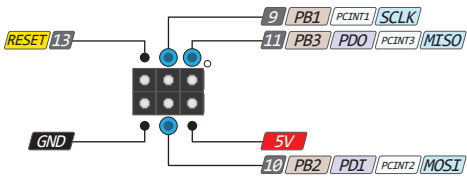
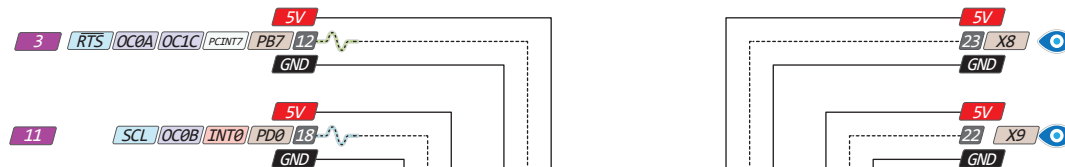
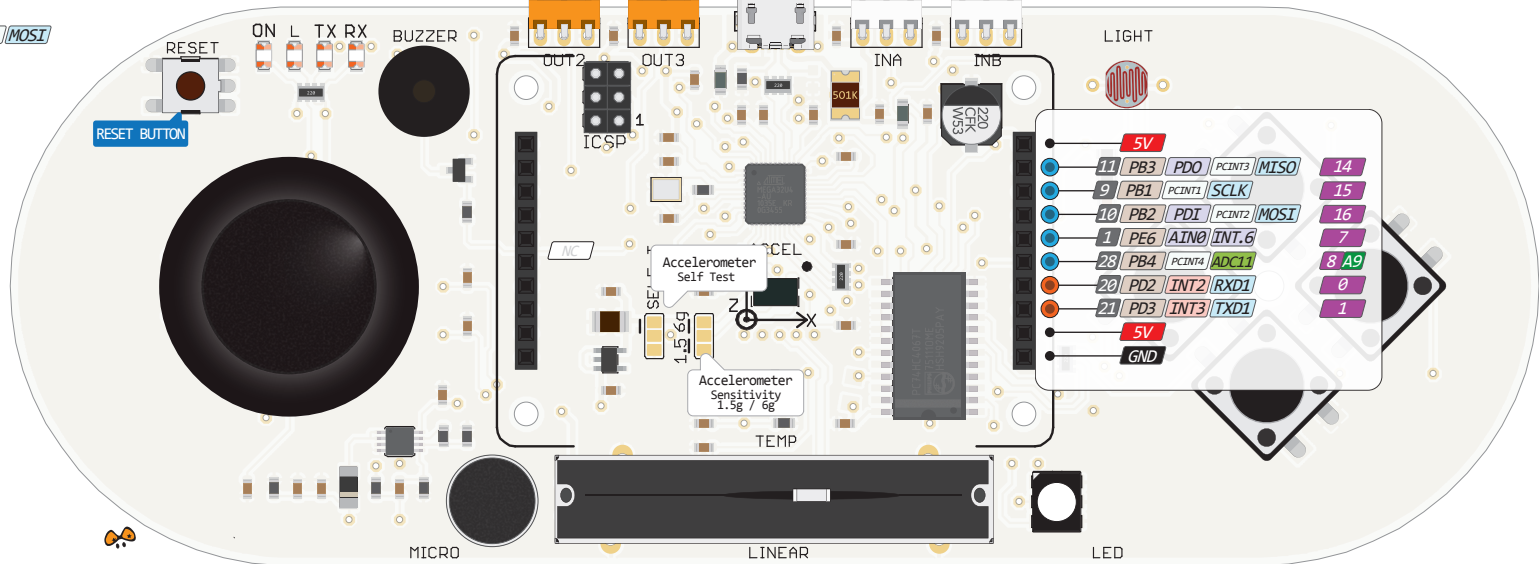


# ESPLORA PINOUT



Connected to 74HC4067D Multiplexer



**PWM TYPE**

8/16bit

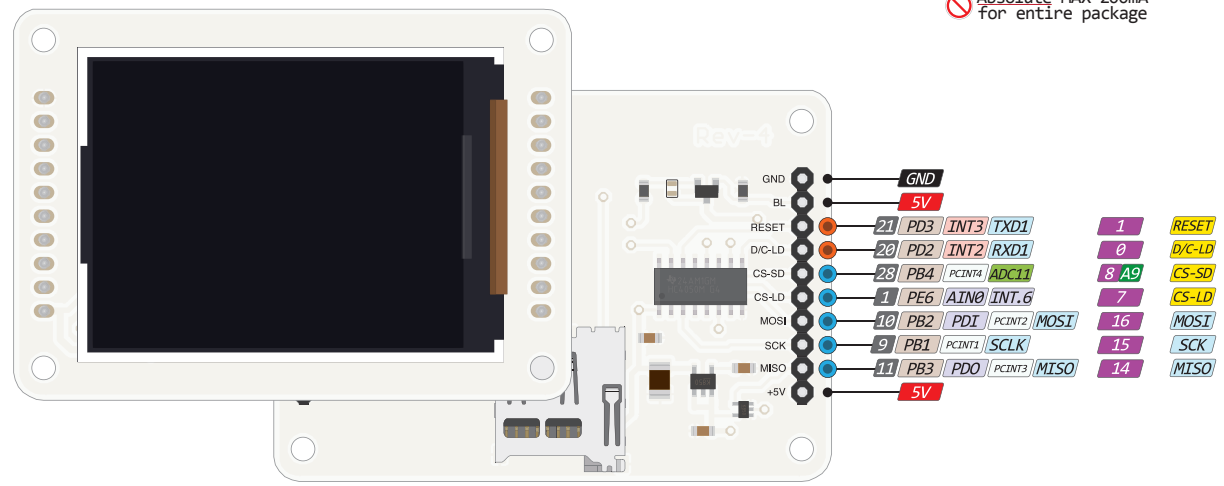
8bit

- IDE
- Power
- GND
- Serial Pin
- Analog Pin
- Control
- INT
- Physical Pin
- Port Pin
- Pin function
- Interrupt Pin
- PWM Pin
- Port Power



Absolute MAX per pin 20mA recommended 10mA

Absolute MAX 200mA for entire package



The power sum for each pin's group should not exceed 100mA